

# CONTENTS



## JOCKEY WHEELS

---

3.1



## "SPECIAL" JOCKEY WHEELS

---

3.2



## JOCKEY WHEELS "CIVIL ENGINEERING"

---

3.3



## PROP STANDS

---

3.4



## BALL BEARING TURNTABLES

---

3.5



## MUDGUARDS

---

3.6

# JOCKEY WHEELS

TELESCOPIC - ELECTRO-GALVANIZED AS STANDARD

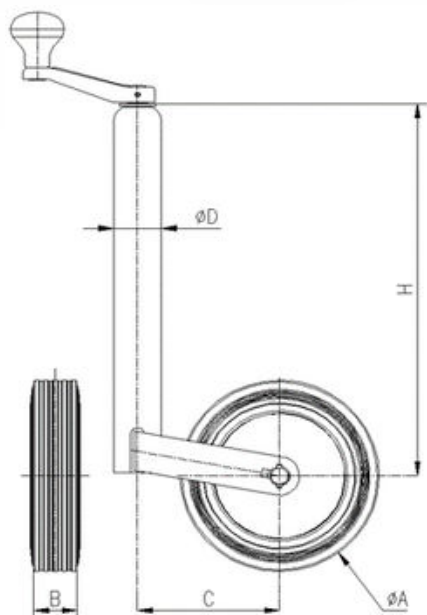
Ref : 1200218



Ref : 1200870



Ref : 1200222M  
CLAMP Ø48



Ref : 1200220



Ref : 1200223  
CLAMP Ø60

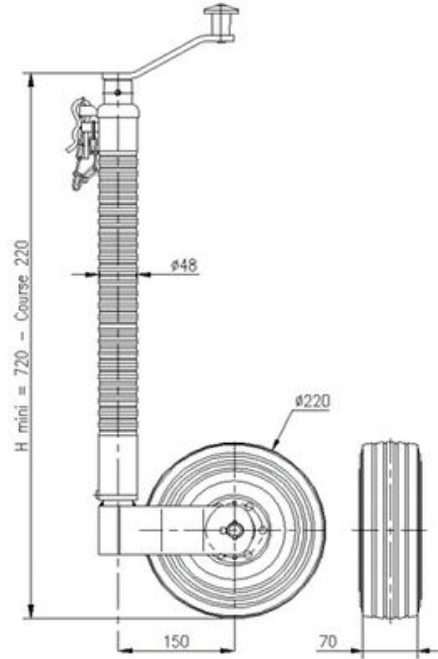


REF.	Static load kg	H mini mm	Stroke mm	ØD mm	Wheel ØA x B	C mm	Weight kg
1200218	150	390	220	48	200x50	130	4.7
1200870	150	505	230	48	200x50	130	7.3
1200220	250	420	285	60	220x70	150	9.1

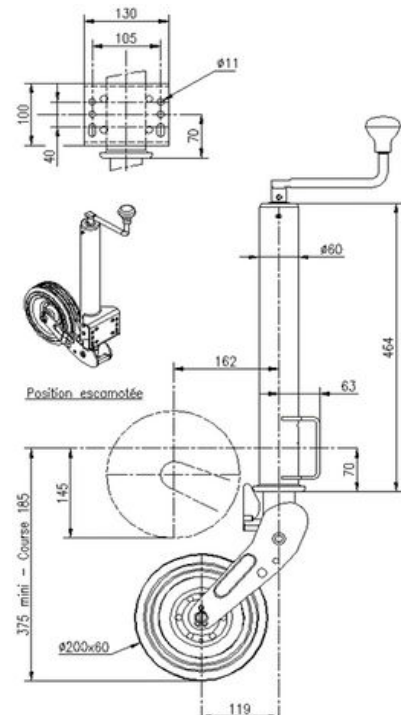
# "SPECIAL" JOCKEY WHEELS

TELESCOPIC - ELECTRO-GALVANIZED AS STANDARD

Ref : 1200357 REINFORCED



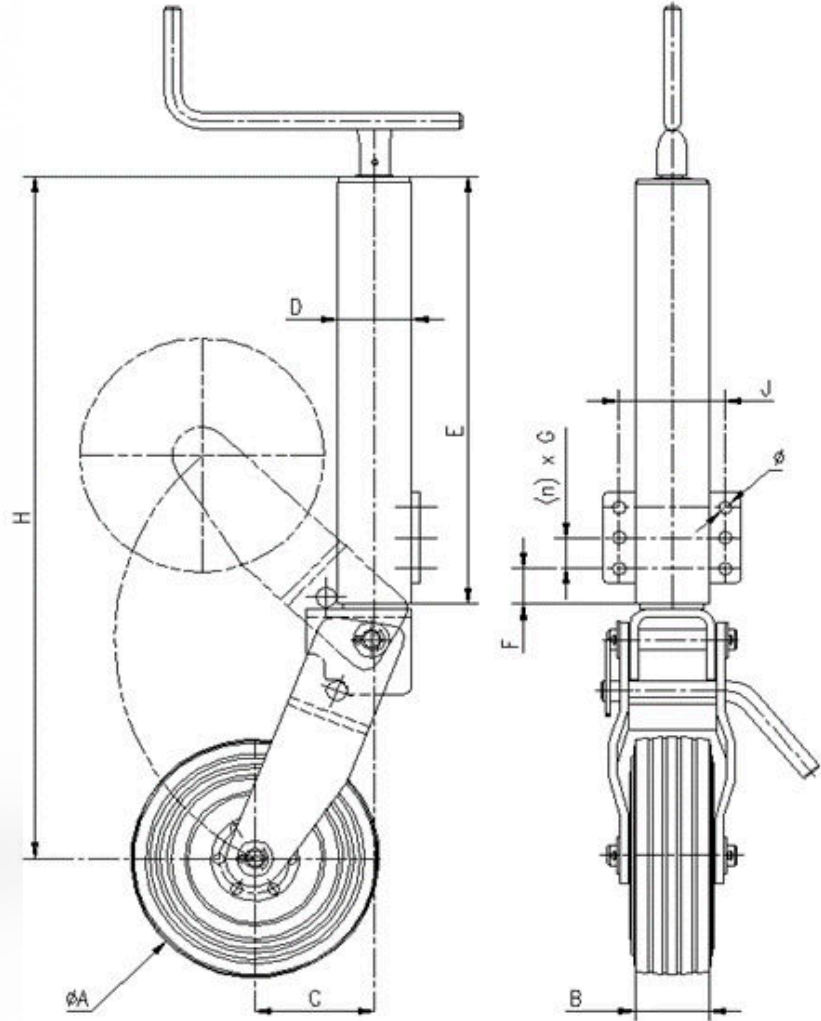
Ref : 1200328 AUTOMATIC RETRACTABLE



REF.	Static load kg	H mini mm	Stroke mm	ØD mm	Wheel ØA x B	C mm	Weight kg
1200357	250	375	185	48	220x70	150	11
1200328	250	720	220	60	200x60	119	10.5

# JOCKEY WHEELS "CIVIL ENGINEERING"

TELESCOPIC AND RETRACTABLE - ELECTRO-GALVANIZED AS STANDARD



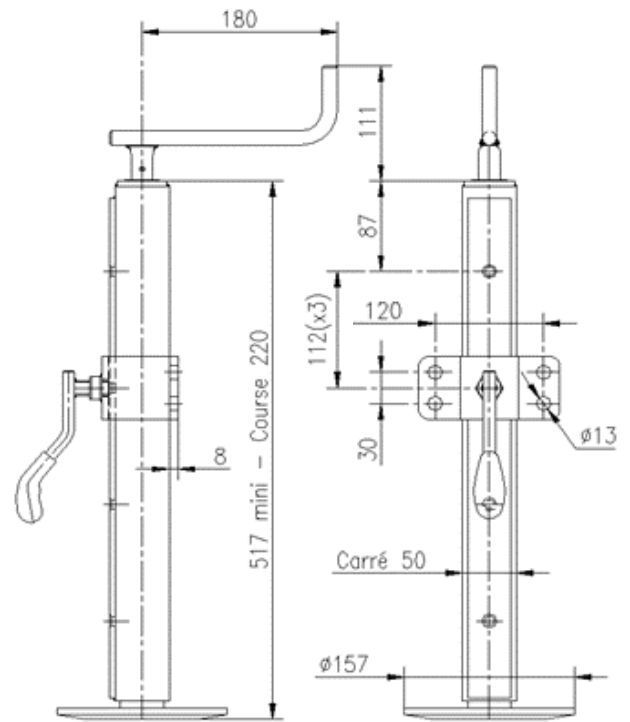
REF.	Static load kg	H mini		C (1 or 2)		Stroke mm	D mm	Wheel ØA x B	E mm	FIXATION			
		F	(n)xG	(1)	(2)					F	(n)xG	J	Ø
1200821	600	671	577	113	212	290	70 Square	200x85	420	35	(2)x30	100	13
1200821RT*	600	671	577	113	212	290	70 Square	200x85	420	35	(2)x30	100	13

\* Steel Wheel (100% steel)

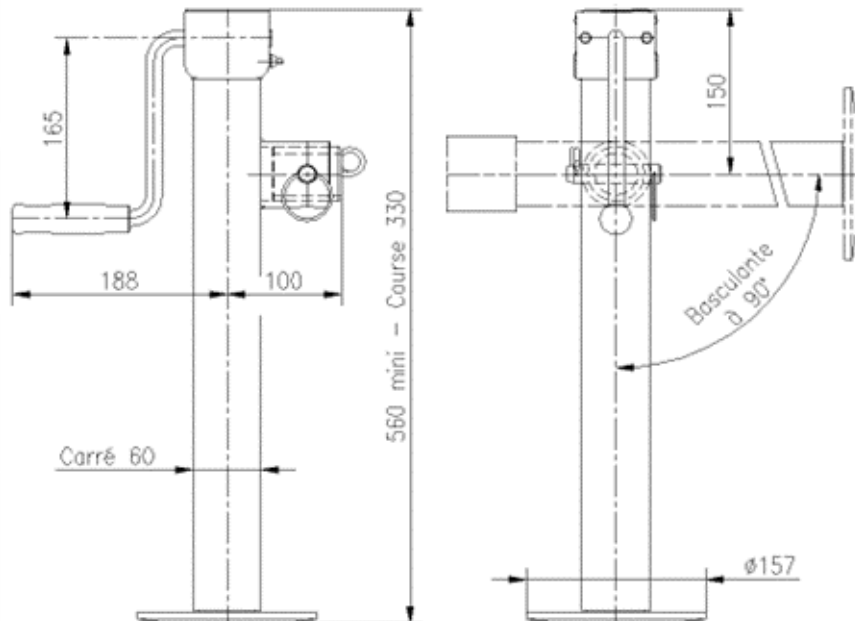
# PROP STANDS

ELECTRO-GALVANIZED AS STANDARD

Ref : 1200936



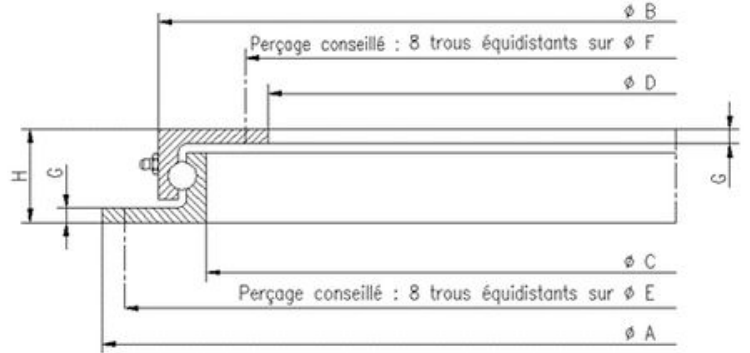
Ref : 1200394



REF.	TYPE	LOAD static kg	Stroke mm	Weight kg	LIFTING CAPACITY kg
1200936	50 square STAND	350	220	7.7	100
1200394	60 square STAND	1300	330	9.2	375

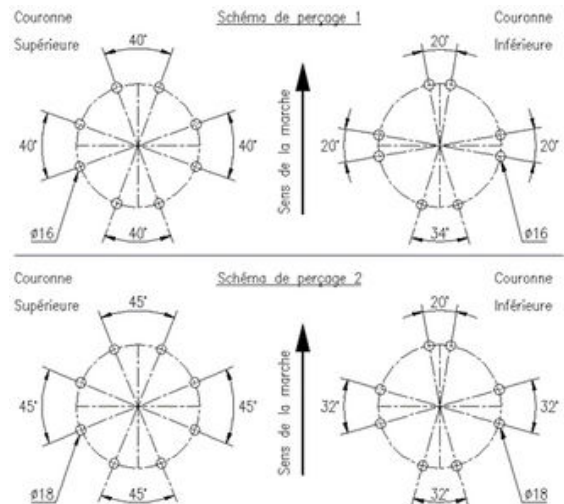
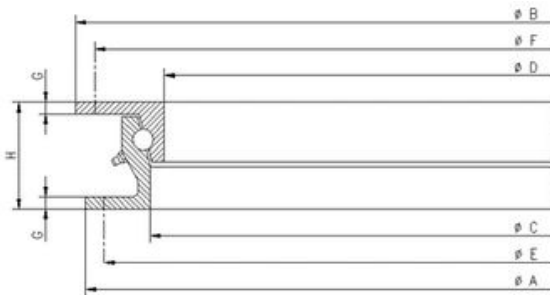
# BALL BEARING TURNTABLES

## HIGH SPEED



REF.	LOAD Axial	A mm	B mm	C mm	D mm	E mm	F mm	G mm	H mm	Information	Weight kg
1373000	1.8 t	500	437	384	315	475	340	8	52	-	17
1374000	2.5 t	650	587	534	465	625	490	8	52	-	23
1375000	3 t	750	687	634	565	725	590	8	52	DELIVERED	28
1376000	3.5 t	850	787	734	665	825	690	8	52	UNDRILLED	32
1377000	4 t	950	887	834	765	925	790	8	52	-	36
1378000	4.5 t	1050	987	934	865	1025	890	8	52	-	40

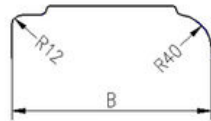
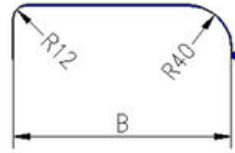
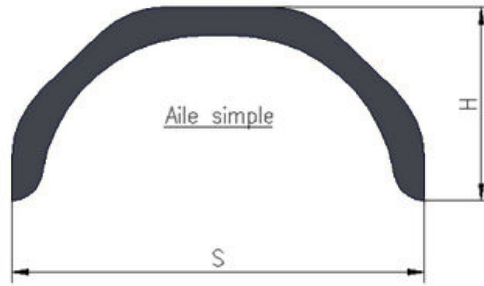
At 25 km/h, increase the Axial Load by 30 to 50%



REF.	LOAD Axial	A mm	B mm	C mm	D mm	E mm	F mm	G mm	H mm	DRILLED According to Diagram	Weight kg
1379000	3 t	685	700	588	567	657	671	9	80	UNDRILLED	32
1380000	5 t	880	895	783	762	852	866	9	80	1	43
1381000	6 t	1000	1015	903	882	972	986	9	80	UNDRILLED	48
1382000	6.5 t	1090	1105	993	972	1060	1074	9	80	2	52
1383000	7 t	1000	1011	886	859	960	974	10	90	UNDRILLED	63
1384000	8 t	1100	1111	986	959	1060	1074	10	90	2	69
1386000	10 t	1100	1111	986	959	1060	1074	10	90	2	69
1388000	12 t	1100	1111	986	959	1060	1074	10	90	2	69
1389000	13 t	1200	1211	1086	1059	1160	1174	10	90	2	76

At 25 km/h, increase the Axial Load by 20%

# MUDGUARDS



REF.	TYPE	WHEELS	MATERIAL	PROTECTION	DIMENSION			Weight kg
					B	S	H	
2372055 simple	<b>200x660 - rounded</b>	12", 13"	Sheet metal	Galvanized	200	660	345	2.3
2372056 simple	<b>200x760 - beveled edges</b>	13", 14"	Sheet metal	Galvanized	200	760	390	2.6
2372263 simple	<b>260x800 - rounded</b>	15", 16"	Sheet metal	Galvanized	260	800	415	3.1
2372063 double	<b>200x1480 - rounded</b>	12", 13"	Sheet metal	Galvanized	200	1480	365	3.9
2372064 double	<b>230x1510 - beveled edges</b>	14", 15"	Sheet metal	Galvanized	230	1510	380	4.8
2372191 double	<b>260x1500 - rounded</b>	15", 16"	Sheet metal	Galvanized	260	1500	410	5.3

PLASTIC FENDER ON REQUEST